

DATA PRIVACY DAY

is an internationally recognized day dedicated to creating awareness about the importance of privacy and protecting personal information.



CREATING A GLOBAL COMMUNITY THAT RESPECTS PRIVACY, SAFEGUARDS DATA AND ENABLES TRUST BEGINS WITH YOU!

STOP. THINK. CONNECT.™ is simple, actionable advice you can use to educate people about privacy at home, at work and in your community.

AT HOME

TALK WITH YOUR FAMILY AND FRIENDS ABOUT WAYS TO STAY SAFER ONLINE.



PERSONAL INFORMATION IS LIKE MONEY. VALUE IT. PROTECT IT.

Be thoughtful about how your personal information is collected through apps and websites.

OWN YOUR ONLINE PRESENCE

Learn about and use privacy and security settings on your favorite online games, apps and platforms.

AT WORK

HELP ALL EMPLOYEES UNDERSTAND THE ROLE THEY PLAY IN MAKING SURE PRIVACY IS ACHIEVED AND MAINTAINED.



WHEN IN DOUBT, THROW IT OUT

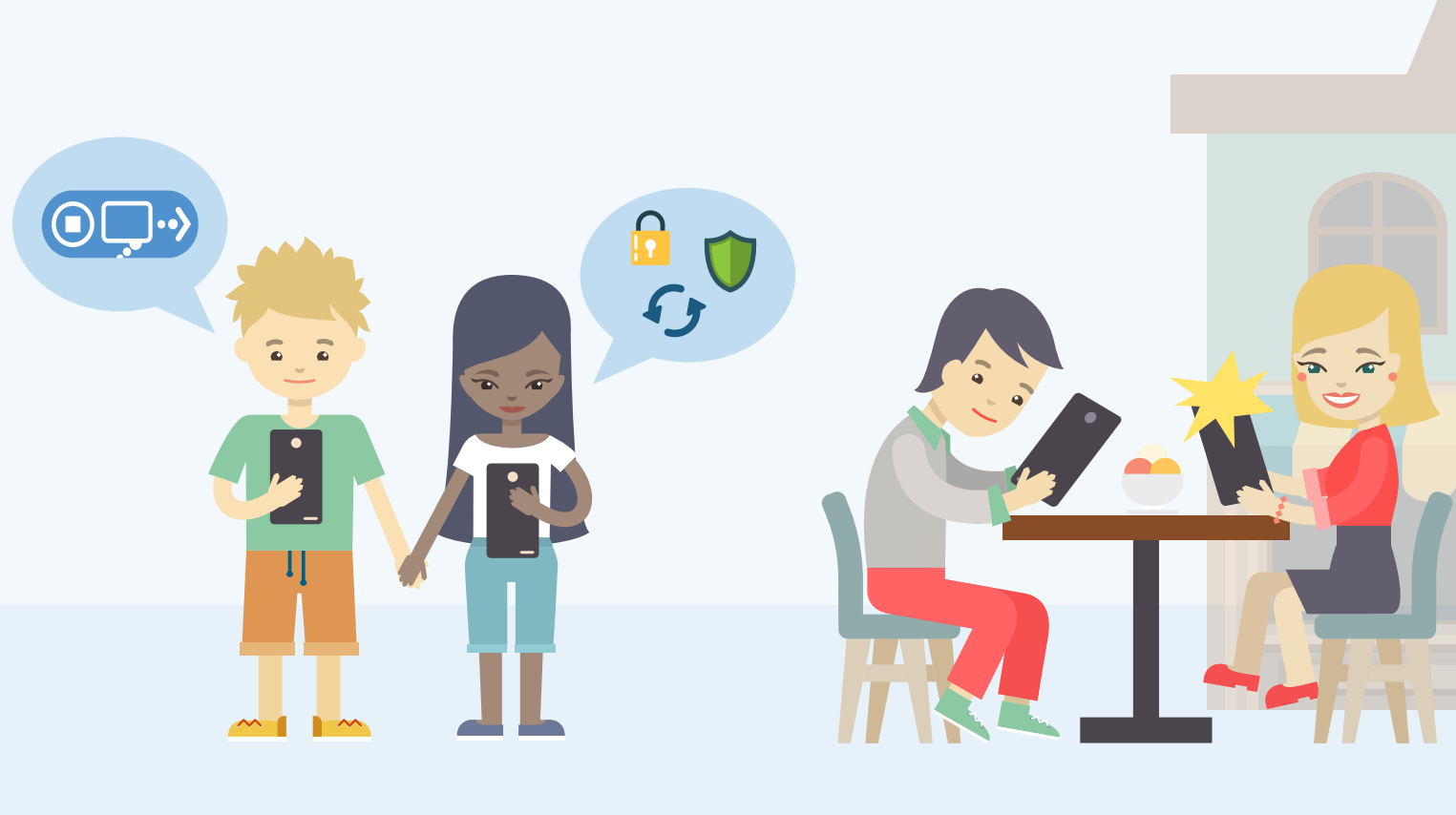
Links in emails, social media posts and online advertising are often how cybercriminals steal personal information. Even if you know the source, if something looks suspicious, report it or delete it.

PRIVACY IS GOOD FOR BUSINESS

Engage employees with initiatives such as lunch and learns, funny videos and competitions.

IN YOUR COMMUNITY

SHARE YOUR PRIVACY KNOWLEDGE BY VOLUNTEERING IN A LOCAL SCHOOL, SENIOR CARE FACILITY OR FAITH-BASED ORGANIZATION. USE FREE RESOURCES FROM STAYSAFEONLINE.ORG TO SPREAD THE WORD.



SHARE WITH CARE

Think before posting about yourself and others online. Consider what a post reveals, who might see it and how it could be perceived now and in the future.

BE PART OF SOMETHING BIG!



Join us on Wednesdays in January (Jan. 10, 17 and 24) at 3 p.m. EDT/noon PDT using the hashtag #ChatSTC.

Register yourself and/or your company as a Data Privacy Day Champion.

Use #PrivacyAware on social media and follow us on Facebook (/StaySafeOnline), Twitter (@StaySafeOnline) and Instagram (@PrivacyAware).

FOR FREE RESOURCES AND TO LEARN MORE, VISIT STAYSAFEONLINE.ORG/DATA-PRIVACY-DAY/